

2580  
890  
1000  
dimensions in mm



**LASERVORM**  
Laser Machines – Laser Processing – Wear Protection



contact details - vCard

Südstraße 8, 09648 Altmittweida  
Germany

Phone: +49 (0) 37 27 99 74 - 0  
Fax: +49 (0) 37 27 99 74 - 10  
E-Mail: [info@laservorm.com](mailto:info@laservorm.com)  
Internet: [www.laservorm.com](http://www.laservorm.com)



Europäische Union



Europa fördert Sachsen.  
**EFRE**  
Europäischer Fonds für  
regionale Entwicklung

LV MINI



LASER SYSTEMS  
FOR MATERIAL PROCESSING  
AT THE HIGHEST LEVEL



# FINE WELDING FINE CUTTING, HARDENING PERFORATING, MARKING OF METALS AND PLASTICS

- maximum productivity on just **one square metre** base area
- a variety of options for production of individual components and small series
- the „Swiss pocket knife“ for your workshop
- travelling range (X, Y, Z): 200 mm x 150 mm x 150 mm
- workspace (X, Y, Z): 600 mm x 600 mm x 300 mm
- individual equipment packages available

## EQUIPMENT:

- Laser:**
  - fibre-coupled solid state laser; diode laser; fibre laser
- Optics:**
  - process-specific as for welding, cutting or hardening
  - macro camera image with cross threads
  - LED cluster lights support the set-up
- Mechanics:**
  - axis of rotation optional
- Control/Software:**
  - industrial CNC for  $\mu$ s-accurate laser control and repeat-accurate quality
  - 4-axis interpolation
  - network connection
- Housing:**
  - referring to laser protection class 1
- Service:**
  - maintenance, repair and spare parts
  - technology development
  - operator training
  - remote access to system parameters possible
- Ergonomics:**
  - motor-operated lift gate for short charging times
  - individually adjustable operating panel
  - workstation available in a sitting as well as standing design



## APPLICATION EXAMPLES

- laser precision welding of components of minimal invasive surgery
- laser precision cutting of membrane foils up to a thickness of 4 mm in steel
- precise laser processing of plastics or cardboard
- solid and high-strength weldings to different workpieces such as titan, cobalt nickel-base alloys or stainless



laser-cut flexure bearing



laser fine welding of thin-walled pipes



laser welding seam on a sensor housing



precision cuts on various metals



best accessibility during set-up



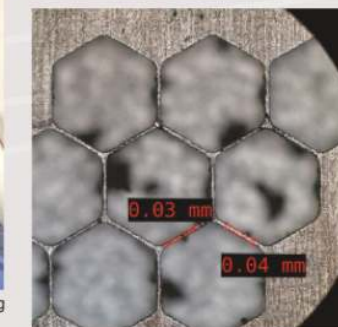
laser welding seam on a metal bellow



laser fine welding at a valve



surgical needle before laser welding



grinding pattern of a laser-cut web structure with minimum web widths

20 YEARS OF EXPERIENCE